



Brochures of Coral RF

Narrowband, Sigfox RF Product

Real time transmission RF Product

FSK RF Product

LORA Product

Zigbee Product

BLE RF Product

ASK Product

Contact information: **Shenzhen HeYan Technology CO.,LTD**

Hongkong Ulike Electronic Co.,Ltd

Address: Room 307, Xinbaoyuan Building, N5179, District 74 Xin'an Street, BaoAn District, Shenzhen, China 518101

Sales department: +0086 755 29662101

E-mail : info@hkulike.com

Web: www.hkulike.com

Real Time Transmission RF Product



N501AS

RF data rate: 1 - 300 kbps
 RF output power: +12dBm
 RF sensitivity: -116 dBm
 Modulation: GFSK, FSK
 Frequency: 862MHz to 928MHz
 (Option:431Mhz to 464Mhz)
 RF pin
 Interfaces: SPI,UART,IIC
 Dimension: 29 x 21 x3 mm
 Operating voltage: 2-3.6V
 Consumption (Sleep): 1uA
 Chip: ADF7023,MCU
 Mounting: SMD



N502AS

RF data rate: 1 - 300 kbps
 RF output power: +24dBm
 RF sensitivity: -122 dBm
 Modulation: GFSK, FSK
 Frequency: 862MHz to 928MHz
 (Option:431Mhz to 464Mhz)
 RF pin
 Interfaces: SPI,UART,IIC
 Dimension: 36 x 24 x 3 mm
 Operating voltage: 2-3.6V
 PA Operating voltage: 3-5V
 Consumption (Sleep): 1uA
 Chip: ADF7023,MCU
 Mounting: SMD



N502ES

RF data rate: 1 - 300 kbps
 RF output power: +30dBm(3.6V)
 RF sensitivity: -124 dBm
 Modulation: GFSK, FSK
 Frequency: 862MHz to 928MHz
 (Option:431Mhz to 464Mhz)
 RF pin,IPEX
 Interfaces: SPI,UART,IIC
 Dimension: 42 x 24 x 3 mm
 Operating voltage: 2-3.6V
 PA Operating voltage: 2-5V
 Consumption (Sleep): 2uA
 Chip: ADF7023,MCU
 Mounting: SMD



N502FS

RF data rate: 1 - 300 kbps
 RF output power: +33dBm (5V)
 RF sensitivity: -124 dBm
 Modulation: GFSK, FSK
 Frequency: 862MHz to 928MHz
 RF pin,IPEX
 Interfaces: SPI,UART,IIC
 Dimension: 42 x 24 x 3 mm
 Operating voltage: 2-3.6V
 PA Operating voltage: 3-5V
 Consumption (Sleep): 2uA
 Chip: ADF7023,MCU
 Mounting: SMD



N210AS

RF data rate: 50 to 2000 kbps
 RF output power: + 3dBm
 RF sensitivity: -96 dBm
 Modulation: FSK
 Frequency: 2400MHz to 2483MHz
 PCB antenna,IPEX
 Interfaces: SPI,UART,IIC
 Dimension: 32 x 21 x 3 mm
 Operating voltage: 3V Consumption
 (Sleep): 1uA
 RF chip: Semtech ADF7242
 Mounting: SMD



N211AS

RF data rate: 50 to 2000 kbps
 RF output power: + 20dBm
 RF sensitivity: -96 dBm
 Modulation: FSK
 Frequency: 2400MHz to 2483MHz
 PCB antenna,IPEX
 Interfaces: SPI,UART,IIC
 Dimension: 38 x 24 x 3 mm
 Operating voltage: 3V
 Consumption (Sleep): 1uA
 RF chip: Semtech ADF7242
 Mounting: SMD

Narrowband, Sigfox RF Product



N511AS

RF data rate: 0 - 200 kbps
 RF output power: +15dBm
 RF sensitivity: -124 dBm
 Modulation: Narrowband
 Frequency: 820MHz to 960Mhz
 (Option:410Mhz-480Mhz,164Mhz-192Mhz)
 RF pin
 Interfaces: SPI
 Dimension: 20 x 17 x 3 mm
 Operating voltage: 2-3.6V
 Consumption (Sleep): 1uA
 Chip: TI CC1120
 Mounting: SMD



N515DS

RF data rate: 0.3 - 200 kbps
 RF output power: +33dBm (+5V)
 RF sensitivity: -124 dBm
 Modulation: Narrowband
 Frequency: 860MHz to 960Mhz
 RF pin, IPEX
 Interfaces: SPI
 Dimension: 36 x 23 x 3 mm
 Operating voltage: 2-3.6V
 PA Operating voltage: 3-5V
 Consumption (Sleep): 2uA
 Chip: TI CC1120
 Mounting: SMD



N515AS

RF data rate: 0.3 - 200 kbps
 RF output power: +24dBm (+3.6V)
 RF sensitivity: -126 dBm
 Modulation: Narrowband
 Frequency: 860MHz to 960Mhz
 (Option:410Mhz-480Mhz,164Mhz-192Mhz)
 RF pin, IPEX
 Interfaces: SPI
 Dimension: 30 x 23 x 3 mm
 Operating voltage: 2-3.6V
 PA Operating voltage: 2.4-6V
 Consumption (Sleep): 1uA
 Chip: TI CC1120
 Mounting: SMD



N516CS

RF data rate: 0.3 - 200 kbps
 RF output power: +27dBm (+3.3V)
 RF sensitivity: -126 dBm
 Modulation: Narrowband
 Frequency: 860MHz to 960Mhz
 RF pin, SMA
 Interfaces: SPI
 Dimension: 36 x 24 x 3 mm
 Operating voltage: 2-3.6V
 Consumption (Sleep): 2uA
 Chip: TI CC1120
 Mounting: SMD



N515ES

RF data rate: 0.3 - 200 kbps
 RF output power: +30dBm (+3.6V)
 RF sensitivity: -126 dBm
 Modulation: Narrowband
 Frequency: 860MHz to 960Mhz
 (Option:410Mhz-480Mhz,164Mhz-192Mhz)
 RF pin, IPEX
 Interfaces: SPI
 Dimension: 36 x 23 x 3 mm
 Operating voltage: 2-3.6V
 PA Operating voltage: 2-5V
 Consumption (Sleep): 2uA
 Chip: TI CC1120
 Mounting: SMD



N517AS

RF data rate: 0.3 - 200 kbps
 RF output power: +24dBm (+3.6V)
 RF sensitivity: -126 dBm
 Modulation: Narrowband
 Frequency: 860MHz to 960Mhz
 (Option:410Mhz-480Mhz,164Mhz-192Mhz)
 RF pin, IPEX
 Interfaces: SPI
 Dimension: 30 x 23 x 3 mm
 Operating voltage: 2-3.6V
 PA Operating voltage: 3-6V
 Consumption (Sleep): 1uA
 Chip: TI CC1125
 Mounting: SMD



N517ES

RF data rate: 0.3 - 200 kbps
 RF output power: +30dBm (+3.6V)
 RF sensitivity: -126 dBm
 Modulation:Narrowband
 Frequency: 860MHz to 960Mhz
 (Option:410Mhz-480Mhz,164Mhz-192Mhz)
 RF pin,IPEX
 Interfaces: SPI
 Dimension: 36 x 23 x 3 mm
 Operating voltage: 2-3.6V
 PA Operating voltage: 2-5V
 Consumption (Sleep): 2uA
 RF chip: TI CC1125
 Mounting: SMD



N517DS

RF data rate: 0.3 - 200 kbps
 RF output power: +33dBm (+5V)
 RF sensitivity: -126 dBm
 Modulation:Narrowband
 Frequency: 860MHz to 960Mhz
 RF pin,IPEX
 Interfaces: SPI
 Dimension: 36 x 23 x 3 mm
 Operating voltage: 2-3.6V
 PA Operating voltage: 2-5V
 Consumption (Sleep): 2uA
 RF chip: TI CC1125
 Mounting: SMD



N512AS

RF data rate: 1.2 - 200 kbps
 RF output power: +15dBm
 RF sensitivity: -120 dBm
 Modulation: Narrowband
 Frequency: 860MHz to 960Mhz
 (Option:410Mhz-480Mhz,164Mhz-192Mhz)
 RF pin
 Interfaces: SPI,UART,IIC
 Dimension: 29 x 21 x3 mm
 Operating voltage: 3V
 Consumption (Sleep): 2uA
 Chip: TI CC1120,MCU
 Mounting: SMD



N513AS

RF data rate: 1.2 - 50 kbps
 RF output power: +24dBm (+3.6V)
 RF sensitivity: -124 dBm
 Modulation:Narrowband
 Frequency: 860MHz to 960Mhz
 (Option:410Mhz-480Mhz,164Mhz-192Mhz)
 RF pin
 Interfaces: SPI,UART,IIC
 Dimension: 36 x 24 x 3 mm
 Operating voltage: 2-3.6V
 PA Operating voltage: 2.4-6V
 Consumption (Sleep): 2uA
 Chip: TI CC1120,MCU
 Mounting: SMD



N513FS

RF data rate: 1.2 - 50 kbps
 RF output power: +30dBm (+3.6V)
 RF sensitivity: -126 dBm
 Modulation: Narrowband
 Frequency: 860MHz to 960Mhz
 (Option:410Mhz-480Mhz,164Mhz-192Mhz)
 RF pin,IPEX
 Interfaces: SPI,UART,IIC
 Dimension: 42 x 24 x 3 mm
 Operating voltage: 2-3.6V
 PA Operating voltage: 2-5V
 Consumption (Sleep): 2uA
 Chip: TI CC1120,MCU
 Mounting: SMD



N513ES

RF data rate: 1.2 - 50 kbps
 RF output power: +33dBm (+5V)
 RF sensitivity: -126 dBm
 Modulation:Narrowband
 Frequency: 860MHz to 960Mhz
 RF pin,IPEX
 Interfaces: SPI,UART,IIC
 Dimension: 42 x 24 x 3 mm
 Operating voltage: 2-3.6V
 PA Operating voltage: 2-5V
 Consumption (Sleep): 2uA
 Chip: TI CC1120,MCU
 Mounting: SMD



N561AS

RF data rate: 0.3 - 500 kbps
 RF output power: +30dBm (+3.6V)
 RF sensitivity: -126 dBm
 Modulation:Narrowband
 Frequency: 860MHz to 960Mhz
 RF pin,IPEX
 Interfaces: SPI
 Dimension: 36 x 24 x 3 mm
 Operating voltage: 2-3.6V
 PA Operating voltage: 2-5V
 Consumption (Sleep): 2uA
 RF chip: S2-LP
 Mounting: SMD



N561BS

RF data rate: 0.3 - 200 kbps
 RF output power: +33dBm (+5V)
 RF sensitivity: -126 dBm
 Modulation:Narrowband
 Frequency: 860MHz to 960Mhz
 RF pin,IPEX
 Interfaces: SPI
 Dimension: 36 x 24 x 3 mm
 Operating voltage: 2-3.6V
 PA Operating voltage: 2-5V
 Consumption (Sleep): 2uA
 RF chip: S2-LP
 Mounting: SMD

S2-LP Narrowband RF Module

Sub 1G RF Product



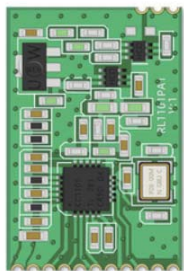
N503AS

RF data rate: 1.2 - 500 kbps
 RF output power: +12dBm
 RF sensitivity: -112 dBm
 Modulation: GFSK, FSK
 Frequency: 868M (779MHz to 928MHz)
 (Option:434M/458M (384Mhz-464MHz))
 RF pin
 Interfaces: SPI
 Dimension: 17 x 16 x 3 mm
 Operating voltage: 2-3.6V
 Consumption (Sleep): 1uA
 RF chip: TI CC1101
 Mounting: SMD



N504AS

RF data rate: 1.2 - 500 kbps
 RF output power: +12dBm
 RF sensitivity: -112 dBm
 Modulation: GFSK, FSK
 Frequency: 868M (779MHz to 928MHz)
 (Option:434M/458M (384Mhz-464MHz))
 RF pin
 Interfaces: UART
 Dimension: 27 x 18 x 3 mm
 Operating voltage: 2-3.6V
 Consumption (Sleep): 1uA
 RF chip: TI CC1101
 Mounting: SMD



N507AS

RF data rate: 1.2 - 500 kbps
 RF output power: +22dBm
 RF sensitivity: -112 dBm
 Modulation: GFSK, FSK
 Frequency: 868M (779MHz to 928MHz)
 (Option:434M/458M (384Mhz-464MHz))
 RF pin
 Interfaces: SPI
 Dimension: 27 x 18 x 3 mm
 Operating voltage: 2-3.6V
 Consumption (Sleep): 1uA
 RF chip: TI CC1101
 Mounting: SMD



N510AS

RF data rate: 1.2 - 500 kbps
 RF output power: +15dBm
 RF sensitivity: -118 dBm
 Modulation: GFSK, FSK
 Frequency: 868M (779MHz to 928MHz)
 (Option:434M/458M (384Mhz-464MHz))
 RF pin
 Interfaces: SPI
 Dimension: 20 x 17 x 3 mm
 Operating voltage: 2-3.6V
 Consumption (Sleep): 1uA
 RF chip: TI CC1121
 Mounting: SMD



N530AS

RF data rate: 0.3 - 1000 kbps
 RF output power: +14dBm
 RF sensitivity: -124 dBm
 Modulation: GFSK, FSK
 Frequency: 863MHz to 930Mhz
 (Option:430Mhz-510Mhz)
 RF pin
 Interfaces: SPI,UART,IIC
 Dimension: 25 x 19 x 3 mm
 Operating voltage: 2-3.6V
 Consumption (Sleep): 1uA
 RF chip: TI CC1310
 Mounting: SMD



N531AS

RF data rate: 0.3 - 1000 kbps
 RF output power: +14dBm
 RF sensitivity: -124 dBm
 Modulation: GFSK, FSK
 Frequency: 863MHz to 930Mhz
 (Option:430Mhz-510Mhz)
 RF pin
 Interfaces: SPI,UART,IIC
 Dimension: 25 x 19 x 3 mm
 Operating voltage: 2-3.6V
 Consumption (Sleep): 1uA
 RF chip: TI CC1312
 Mounting: SMD



N532FS

RF data rate: 0.3 - 1000 kbps
 RF output power: +24dBm (+3.6V)
 RF sensitivity: -124 dBm
 Modulation: GFSK, FSK
 Frequency: 863MHz to 930Mhz
 (Option:430Mhz-510Mhz)
 RF pin,IPEX
 Interfaces: SPI,UART,IIC
 Dimension: 31 x 22 x 3 mm
 Operating voltage: 2-3.6V
 PA Operating voltage: 3-5V
 Consumption (Sleep): 1uA
 RF chip: TI CC1310/CC1312
 Mounting: SMD



N532CS

RF data rate: 0.3 - 1000 kbps
 RF output power: +27dBm (+3.3V)
 RF sensitivity: -126 dBm
 Modulation: GFSK, FSK
 Frequency: 863MHz to 930Mhz RF
 pin,IPEX
 Interfaces: SPI,UART,IIC
 Dimension: 31 x 22 x 3 mm
 Operating voltage: 2-3.6V
 Consumption (Sleep): 1uA
 RF chip: TI CC1310/CC1312
 Mounting: SMD



N532ES

RF data rate: 0.3 - 1000 kbps
 RF output power: +30dBm (+3.6V)
 RF sensitivity: -126 dBm
 Modulation: GFSK, FSK
 Frequency: 863MHz to 930Mhz
 (Option:430Mhz-510Mhz)
 RF pin,IPEX
 Interfaces: SPI,UART,IIC
 Dimension: 36 x 22 x 3 mm
 Operating voltage: 2-3.6V
 PA Operating voltage: 3-5V
 Consumption (Sleep): 1uA
 RF chip: TI CC1310/CC1312
 Mounting: SMD



N532DS

RF data rate: 0.3 - 1000 kbps
 RF output power: +33dBm (+5V)
 RF sensitivity: -126 dBm
 Modulation: GFSK, FSK
 Frequency: 863MHz to 930Mhz
 RF pin,IPEX
 Interfaces: SPI,UART,IIC
 Dimension: 36 x 22 x 3 mm
 Operating voltage: 2-3.6V
 PA Operating voltage: 3-5V
 Consumption (Sleep): 1uA
 RF chip: TI CC1310/CC1312
 Mounting: SMD

N534AP

RF data rate: 0.3 - 1000 kbps
RF output power: +14dBm
RF sensitivity: -122 dBm
Modulation: GFSK, FSK
Frequency: 860MHz to 930Mhz
(Option:430Mhz-510Mhz)
antenna
Interfaces: USB
Dimension: 33 x 19 x 7 mm
Operating voltage: 5V
RF chip: CC1310
Mounting: SMD



N540AS

RF data rate: 1.2 - 500 kbps
RF output power: +20dBm
RF sensitivity: -120 dBm
Modulation: GFSK, FSK
Frequency: 860MHz to 930Mhz
(Option:430Mhz-510Mhz)
RF pin
Interfaces: SPI
Dimension: 16 x 16 x 3 mm
Operating voltage: 2-3.6V
Consumption (Sleep): 1uA
RF chip: SI4463
Mounting: SMD



N541AS

RF data rate: 1.2 - 500 kbps
RF output power: +24dBm (+3.6V)
RF sensitivity: -120 dBm
Modulation: GFSK, FSK
Frequency: 860MHz to 930Mhz
RF pin
Interfaces: SPI
Dimension: 36 x 22 x 3 mm
Operating voltage: 2-3.6V
PA Operating voltage: 2.4-6V
Consumption (Sleep): 1uA
RF chip: SI4463
Mounting: SMD



N544AS

RF data rate: 1.2 - 500 kbps
RF output power: +30dBm (+3.6V)
RF sensitivity: -126 dBm
Modulation: GFSK, FSK
Frequency: 863MHz to 930Mhz
(Option:430Mhz-510Mhz)
RF pin,ipex
Interfaces: SPI
Dimension: 30 x 24 x 3 mm
Operating voltage: 2-3.6V
PA Operating voltage: 2.4-5V
Consumption (Sleep): 1uA
RF chip: SI4463
Mounting: SMD



N545AS

RF data rate: 1.2 - 500 kbps
RF output power: +33dBm (+5V)
RF sensitivity: -126 dBm
Modulation: GFSK, FSK
Frequency: 863MHz to 930Mhz
RF pin,ipex
Interfaces: SPI
Dimension: 30 x 24 x 3 mm
Operating voltage: 2-3.6V
PA Operating voltage: 3-6V
Consumption (Sleep): 1uA
RF chip: SI4463
Mounting: SMD

Lora RF Product



N411AS

RF data rate: 0.018 to 37.5 kbps
RF output power: +19dBm
RF sensitivity: -148 dBm
Modulation: LoRa
Frequency: 410Mhz-510Mhz
RF pin
Interfaces: SPI
Dimension: 17 x 16 x 3 mm
Operating voltage: 2-3.6V
Consumption (Sleep): 1uA
RF chip: Semtech SX1278
Mounting: SMD



N419AS

RF data rate: 1.2 to 37.5 kbps RF
output power: +19dBm
RF sensitivity: -148 dBm
Modulation: LoRa
Frequency: 820MHz to 960MHz
RF pin
Interfaces: SPI
Dimension: 17 x 16 x 3 mm
Operating voltage: 2-3.6V
Consumption (Sleep): 1uA
RF chip: Semtech SX1272
Mounting: SMD



N412AS

RF data rate: 1.2 to 37.5 kbps
RF output power: +19dBm
RF sensitivity: -131 dBm
Modulation: LoRa
Frequency: 410Mhz-510Mhz
RF pin
Interfaces: SPI,UART,IIC
Dimension: 29 x 21 x 3 mm
Operating voltage: 2-3.6V
Consumption (Sleep): 1uA
Chip: SX1278,MCU
Mounting: SMD



N410AS

RF data rate: 1.2 to 37.5 kbps
RF output power: +19dBm
RF sensitivity: -131 dBm
Modulation: LoRa
Frequency: 860MHz to 960MHz
RF pin
Interfaces: SPI,UART,IIC
Dimension: 29 x 21 x 3 mm
Operating voltage: 2-3.6V
Consumption (Sleep): 2uA
RF chip: SX1272
Mounting: SMD



N414AS

RF data rate: 1.2 to 37.5 kbps
RF output power: +29dBm
RF sensitivity: -131 dBm
Modulation: LoRa
Frequency: 410Mhz-510Mhz
RF pin
Interfaces: SPI,UART,IIC
Dimension: 36 x 24 x 3 mm
Operating voltage: 2-3.6V
PA Operating voltage: 2V-5V
Consumption (Sleep): 1uA
Chip: SX1278,MCU
Mounting: SMD



N416AS

RF data rate: 1.2 to 37.5 kbps
RF output power: +27dBm
RF sensitivity: -121 dBm
Modulation: LoRa
Frequency: 410Mhz-510Mhz
RF pin
Interfaces: SPI,UART,IIC
Dimension: 36 x 24 x 3 mm
Operating voltage: 2-3.6V
PA Operating voltage: 2.4V-6V
Consumption (Sleep): 2uA
RF chip: Semtech SX1272,MCU
Mounting: SMD



N417AS

RF data rate: 1.2 to 37.5 kbps
 RF output power: +27dBm
 RF sensitivity: -131 dBm
 Modulation: LoRa
 Frequency: 860Mhz-960Mhz
 RF pin
 Interfaces: SPI,UART,IIC
 Dimension: 36 x 24 x 3 mm
 Operating voltage: 2-3.6V
 PA Operating voltage: 2V-6V
 Consumption (Sleep): 1uA
 Chip: SX1272,MCU
 Mounting: SMD



N418AS

RF data rate: 1.2 to 37.5 kbps
 RF output power: +33dBm
 RF sensitivity: -131 dBm
 Modulation: LoRa
 Frequency: 860Mhz-960Mhz
 RF pin,IPEX
 Interfaces: SPI,UART,IIC
 Dimension: 42 x 24 x 3 mm
 Operating voltage: 2-3.6V
 PA Operating voltage: 2.4V-6V
 Consumption (Sleep): 2uA
 RF chip: Semtech SX1272,MCU
 Mounting: SMD



N419BS

RF data rate: 1.2 to 37.5 kbps
 RF output power: +19dBm
 RF sensitivity: -131 dBm
 Modulation: LoRa
 Frequency: 860Mhz-960Mhz
 RF pin
 Interfaces: SPI
 Dimension: 17 x 16 x 3 mm
 Operating voltage: 2-3.6V
 Consumption (Sleep): 1uA
 Chip: SX1276
 Mounting: SMD



N421AS

RF data rate: 1.2 to 37.5 kbps
 RF output power: +33dBm
 RF sensitivity: -131 dBm
 Modulation: LoRa
 Frequency: 860Mhz-960Mhz
 RF pin,IPEX
 Interfaces: SPI
 Dimension: 36 x 24 x 3 mm
 Operating voltage: 2-3.6V
 PA Operating voltage: 2.4V-6V
 Consumption (Sleep): 2uA
 RF chip: Semtech SX1272
 Mounting: SMD



N401AS

RF data rate: 0.018 to 62.5 kbps
 RF output power: +21dBm
 RF sensitivity: -148 dBm
 Modulation: LoRa
 Frequency: 820MHz to 960MHz
 (Option:410Mhz-510Mhz,164Mhz-192Mhz)
 RF pin
 Interfaces: SPI
 Dimension: 19 x 15 x 3 mm
 Operating voltage: 2-3.6V
 Consumption (Sleep): 1uA
 RF chip: Semtech SX1262
 Mounting: SMD



N416AS

RF data rate: 0.018 to 62.5 kbps
 RF output power: +27dBm
 RF sensitivity: -148 dBm
 Modulation: LoRa
 Frequency: 860MHz to 960MHz
 (Option:410Mhz-510Mhz,164Mhz-192Mhz)
 RF pin
 Interfaces: SPI,UART,IIC
 Dimension: 36 x 24 x 3 mm
 Operating voltage: 2-3.6V
 PA Operating voltage: 3-6V
 Consumption (Sleep): 1uA
 RF chip: Semtech SX1262
 Mounting: SMD



N404AS

RF data rate: 0.018 to 62.5 kbps
 RF output power: +30dBm
 RF sensitivity: -148 dBm
 Modulation: LoRa
 Frequency: 820MHz to 960MHz
 (Option:410Mhz-510Mhz,164Mhz-192Mhz)
 RF pin
 Interfaces: SPI,UART,IIC
 Dimension: 36 x 24 x 3 mm
 Operating voltage: 2-3.6V
 Operating voltage: 2-6V
 Consumption (Sleep): 1uA
 RF chip: Semtech SX1262,MCU
 Mounting: SMD



N405AS

RF data rate: 0.018 to 62.5 kbps
 RF output power: +33dBm
 RF sensitivity: -148 dBm
 Modulation: LoRa
 Frequency: 820MHz to 960MHz
 (Option:410Mhz-510Mhz,164Mhz-192Mhz)
 RF pin
 Interfaces: SPI,UART,IIC
 Dimension: 36 x 24 x 3 mm
 Operating voltage: 2-3.6V
 Consumption (Sleep): 1uA
 RF chip: Semtech SX1262,MCU
 Mounting: SMD



N406AS

RF data rate: 1.2 to 2000 kbps
 RF output power: +12.5dBm
 RF sensitivity: -132 dBm
 Modulation: LoRa,FSK
 Frequency: 2400MHz to 2480MHz
 PCB antenna,IPEX
 Interfaces: SPI
 Dimension: 25 x 16 x 3 mm
 Operating voltage: 2-3.6V
 Consumption (Sleep): 1uA
 RF chip: Semtech SX1280
 Mounting: SMD



N408AS

RF data rate: 1.2 to 2000 kbps
 RF output power: +12.5dBm
 RF sensitivity: -132 dBm
 Modulation: LoRa,FSK
 Frequency: 2400MHz to 2480MHz
 PCB antenna,IPEX
 Interfaces: SPI,UART,IIC
 Dimension: 30 x 20 x 3 mm
 Operating voltage: 2-3.6V
 Consumption (Sleep): 1uA
 RF chip: Semtech SX1280,MCU
 Mounting: SMD



N409AS

RF data rate: 1.2 to 2000 kbps
 RF output power: +24dBm
 RF sensitivity: -132 dBm
 Modulation: LoRa,FSK
 Frequency: 2400MHz to 2480MHz
 PCB antenna,IPEX
 Interfaces: SPI,UART,IIC
 Dimension: 30 x 20 x 3 mm
 Operating voltage: 2-3.6V
 Consumption (Sleep): 1uA
 RF chip: Semtech SX1280,MCU
 Mounting: SMD

2.4G FSK RF Product



N201AP

RF data rate: 2.4 to 500 kbps
 RF output power: + 1dBm
 RF sensitivity: - 102 dBm
 Modulation: FSK
 Frequency: 2400MHz to 2483MHz
 SMA,IPEX
 Interfaces: SPI
 Dimension: 22 x 17 x 3 mm
 Operating voltage: 2-3.6V
 Consumption (Sleep): 1uA
 RF chip: TI CC2500
 Mounting: SMD



N202AP

RF data rate: 2.4 to 500 kbps
 RF output power: + 20dBm
 RF sensitivity: - 102 dBm
 Modulation: FSK
 Frequency: 2400MHz to 2483MHz
 SMA
 Interfaces: SPI
 Dimension: 28 x 18 x 3 mm
 Operating voltage: 2-3.6V
 Consumption (Sleep): 1uA
 RF chip: TI CC2500
 Mounting: SMD



N207AS

RF data rate: 2.4 to 500 kbps
 RF output power: + 1dBm
 RF sensitivity: - 102 dBm
 Modulation: FSK
 Frequency: 2400MHz to 2483MHz
 PCB antenna,IPEX
 Interfaces: SPI,UART,IIC
 Dimension: 26 x 17 x 3 mm
 Operating voltage: 2-3.6V
 Consumption (Sleep): 1uA
 RF chip: TI CC2510
 Mounting: SMD



N208AP

RF data rate: 2.4 to 500 kbps
 RF output power: + 1dBm
 RF sensitivity: - 102 dBm
 Modulation: FSK
 Frequency: 2400MHz to 2483MHz
 PCB antenna
 Interfaces: USB
 Dimension: 34 x 17 x 3 mm
 Operating voltage: 5V
 Consumption (Sleep): 1uA
 RF chip: TI CC2511
 Mounting: SMD



N209AS

RF data rate: 2.4 to 500 kbps
 RF output power: + 20dBm
 RF sensitivity: - 96 dBm
 Modulation: FSK
 Frequency: 2400MHz to 2483MHz
 PCB antenna,IPEX
 Interfaces: SPI,UART,IIC
 Dimension: 34 x 17 x 3 mm
 Operating voltage: 2-3.6V
 Consumption (Sleep): 1uA
 RF chip: TI CC2510
 Mounting: SMD



N203BS

RF data rate: 250 to 2000 kbps
 RF output power: + 4dBm
 RF sensitivity: - 96 dBm
 Modulation: FSK
 Frequency: 2400MHz to 2483MHz
 PCB antenna,IPEX
 Interfaces: SPI,UART,IIC
 Dimension: 26 x 17 x 3 mm
 Operating voltage: 2-3.6V
 Consumption (Sleep): 1uA
 RF chip: TI CC2543
 Mounting: SMD



N204AS

RF data rate: 250 to 2000 kbps
 RF output power: + 20dBm
 RF sensitivity: - 96 dBm
 Modulation: FSK
 Frequency: 2400MHz to 2483MHz
 PCB antenna,IPEX
 Interfaces: SPI,UART,IIC
 Dimension: 26 x 17 x 3 mm
 Operating voltage: 2-3.6V
 Consumption (Sleep): 1uA
 RF chip: TI CC2543
 Mounting: SMD



N206AP

RF data rate: 250 to 2000 kbps
 RF output power: + 4dBm
 RF sensitivity: - 96 dBm
 Modulation: FSK
 Frequency: 2400MHz to 2483MHz
 PCB antenna,IPEX
 Interfaces: USB
 Dimension: 34 x 17 x 3 mm
 Operating voltage: 5V
 Consumption (Sleep): 1uA
 RF chip: TI CC2544
 Mounting: SMD



N203AS

RF data rate: 250 to 2000 kbps
 RF output power: + 4dBm
 RF sensitivity: - 96 dBm
 Modulation: FSK
 Frequency: 2400MHz to 2483MHz
 PCB antenna,IPEX
 Interfaces: SPI,UART,IIC
 Dimension: 27 x 27 x 3 mm
 Operating voltage: 2-3.6V
 Consumption (Sleep): 1uA
 RF chip: TI CC2543
 Mounting: SMD

CC2500,CC2511,CC2510,CC2543,CC2544 2.4G FSK RF Module,Dongle

Zigbee RF Product



N700AS

RF data rate: 250 kbps
 RF output power: + 4dBm
 RF sensitivity: - 96 dBm
 Modulation: DSSS,Zigbee
 Frequency: 2405MHz to 2480MHz
 PCB antenna
 Interfaces: SPI,UART,IIC
 Dimension: 26 x 15 x 3 mm
 Operating voltage: 2-3.6V
 Consumption (Sleep): 1uA
 RF chip: TI CC2530
 Mounting: SMD



N702AS

RF data rate: 250 kbps
 RF output power: + 20dBm
 RF sensitivity: - 100 dBm
 Modulation: DSSS,Zigbee
 Frequency: 2405MHz to 2480MHz
 PCB antenna,IPEX
 Interfaces: SPI,UART,IIC
 Dimension: 33 x 19 x 3 mm
 Operating voltage: 2-3.6V
 Consumption (Sleep): 1uA
 RF chip: TI CC2530
 Mounting: SMD

CC2530,CC2531,CC2538,CC2630 Zigbee RF Module,Dongle



N703AP

RF data rate: 250 kbps
 RF output power: + 4dBm
 RF sensitivity: - 100 dBm
 Modulation: DSSS,Zigbee
 Frequency: 2405MHz to 2480MHz
 PCB antenna
 Interfaces: SPI,UART,IIC
 Dimension: 28 x 18 x 3 mm
 Operating voltage: 2-3.6V
 Consumption (Sleep): 1uA
 RF chip: TI CC2630
 Mounting: SMD



N709AP

RF data rate: 250 kbps
 RF output power: + 20dBm
 RF sensitivity: - 100 dBm
 Modulation: DSSS,Zigbee
 Frequency: 2405MHz to 2480MHz
 PCB antenna,ipex
 Interfaces: USB
 Dimension: 60 x 18 x 3 mm
 Operating voltage: 5V
 RF chip: TI CC2531
 Mounting: USB PLUS



N707AP

RF data rate: 250 kbps
 RF output power: + 4dBm
 RF sensitivity: - 96 dBm
 Modulation: DSSS,Zigbee
 Frequency: 2405MHz to 2480MHz
 PCB antenna
 Interfaces: USB
 Dimension: 34 x 17 x 3 mm
 Operating voltage: 5V
 RF chip: TI CC2531
 Mounting: USB PLUS



N710AP

RF data rate: 250 kbps
 RF output power: + 21dBm
 RF sensitivity: - 100 dBm
 Modulation: DSSS,Zigbee
 Frequency: 2405MHz to 2480MHz
 PCB antenna,ipex
 Interfaces: USB
 Dimension: 60 x 18 x 3 mm
 Operating voltage: 5V
 RF chip: TI CC2538
 Mounting: USB PLUS



N706AP

RF data rate: 250 kbps
 RF output power: + 4dBm
 RF sensitivity: - 96 dBm
 Modulation: DSSS,Zigbee
 Frequency: 2405MHz to 2480MHz
 PCB antenna
 Interfaces: USB
 Dimension: 46 x 17 x 3 mm
 Operating voltage: 5V
 RF chip: TI CC2531
 Mounting: USB PLUS



N711AP

RF data rate: 250 kbps
 RF output power: + 4dBm
 RF sensitivity: - 98 dBm
 Modulation: DSSS,Zigbee
 Frequency: 2405MHz to 2480MHz
 PCB antenna,ipex
 Interfaces: USB
 Dimension: 50 x 18 x 3 mm
 Operating voltage: 5V
 RF chip: TI CC2538
 Mounting: USB PLUS

BLE RF Product



N701AS

RF data rate: 250 kbps
RF output power: + 4dBm
RF sensitivity: - 96 dBm
Modulation: FSK,BLE
Frequency: 2402MHz to 2480MHz
PCB antenna
Interfaces: SPI,UART,IIC
Dimension: 26 x 15 x 3 mm
Operating voltage: 2-3.6V
Consumption (Sleep): 1uA
RF chip: TI CC2540
Mounting: SMD



N707AP

RF data rate: 250 kbps
RF output power: + 4dBm
RF sensitivity: - 88 dBm
Modulation: FSK,BLE
Frequency: 2405MHz to 2480MHz
PCB antenna
Interfaces: USB
Dimension: 34 x 17 x 7 mm
Operating voltage: 5V
RF chip: TI CC2540
Mounting: USB PLUS



N704AS

RF data rate: 250 kbps
RF output power: + 4dBm
RF sensitivity: - 92 dBm
Modulation: FSK,BLE
Frequency: 2402MHz to 2480MHz
PCB antenna
Interfaces: SPI,UART,IIC
Dimension: 28 x 18 x 3 mm
Operating voltage: 3V
Consumption (Sleep): 1uA
RF chip: TI CC2640
Mounting: SMD

Low Energy,BLE4.0 Module,BLE4.0 Dongle



N105AP

RF data rate: 1-10 kbps
RF output power: + 10dBm
Modulation: ASK
Frequency: 433.92MHz
antenna
Interfaces: IO
Dimension: 14 x 14 x 5 mm
Operating voltage: 3V
Consumption (Sleep): 1uA
Mounting: PLUS

ASK RF Product



N106AP

RF data rate: 1-10 kbps
RF sensitivity: - 102 dBm
Modulation: ASK
Frequency: 433.92MHz
antenna
Interfaces: IO
Dimension: 15 x 15 x 3 mm
Operating voltage: 3V
Mounting: PLUS



For questions please contact with us!

Contact information: **Shenzhen HeYan Technology CO.,LTD**
Hongkong Ulike Electronic Co.,Ltd
Address:Room307,Xinbaoyuan Building,N5179,District 74 Xin an Street, BaoAn
District,Shenz hen,China 518101
Sales department: +0086 755 29662101
E-mail : info@hkulike.com
Web: www.hkulike.com

All rights are reserved. Reproduction in whole or in part is prohibited without the prior written consent of the copyright owner. The information presented in this document does not form part of any quotation or contract, is believed to be accurate and reliable and may be changed without notice. No liability will be accepted by the publisher for any consequence of its use. Publication thereof does not convey nor imply any license under patent- or other industrial or intellectual property rights.