



FSK RF Product

Contact information: **Shenzhen HeYan Technology CO.,LTD**
Hongkong Ulike Electronic Co.,Ltd
Address:Room307,Xinbaoyuan Building,N5179,District 74 Xin'an Street, BaoAn
District,Shenzhen,China 518101
Sales department: +0086 755 29662101
E-mail : info@hkulike.com
Web: www.hkulike.com

Sub 1G RF Product



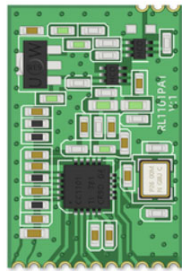
N503AS

RF data rate: 1.2 - 500 kbps
 RF output power: +12dBm
 RF sensitivity: -112 dBm
 Modulation: GFSK, FSK
 Frequency: 868M (779MHz to 928MHz)
 (Option:434M/458M (384Mhz-464MHz))
 RF pin
 Interfaces: SPI
 Dimension: 17 x 16 x 3 mm
 Operating voltage: 2-3.6V
 Consumption (Sleep): 1uA
 RF chip: TI CC1101
 Mounting: SMD



N504AS

RF data rate: 1.2 - 500 kbps
 RF output power: +12dBm
 RF sensitivity: -112 dBm
 Modulation: GFSK, FSK
 Frequency: 868M (779MHz to 928MHz)
 (Option:434M/458M (384Mhz-464MHz))
 RF pin
 Interfaces: UART
 Dimension: 27 x 18 x 3 mm
 Operating voltage: 2-3.6V
 Consumption (Sleep): 1uA
 RF chip: TI CC1101
 Mounting: SMD



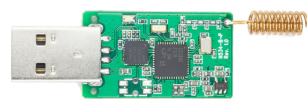
N507AS

RF data rate: 1.2 - 500 kbps
 RF output power: +22dBm
 RF sensitivity: -112 dBm
 Modulation: GFSK, FSK
 Frequency: 868M (779MHz to 928MHz)
 (Option:434M/458M (384Mhz-464MHz))
 RF pin
 Interfaces: SPI
 Dimension: 27 x 18 x 3 mm
 Operating voltage: 2-3.6V
 Consumption (Sleep): 1uA
 RF chip: TI CC1101
 Mounting: SMD



N510AS

RF data rate: 1.2 - 500 kbps
 RF output power: +15dBm
 RF sensitivity: -118 dBm
 Modulation: GFSK, FSK
 Frequency: 868M (779MHz to 928MHz)
 (Option:434M/458M (384Mhz-464MHz))
 RF pin
 Interfaces: SPI
 Dimension: 20 x 17 x 3 mm
 Operating voltage: 2-3.6V
 Consumption (Sleep): 1uA
 RF chip: TI CC1121
 Mounting: SMD



N534AP

RF data rate: 0.3 - 1000 kbps
 RF output power: +14dBm
 RF sensitivity: -122 dBm
 Modulation: GFSK, FSK
 Frequency: 860MHz to 930Mhz
 (Option:430Mhz-510Mhz)
 antenna
 Interfaces: USB
 Dimension: 33 x 19 x 7 mm
 Operating voltage: 5V
 RF chip: CC1310
 Mounting: SMD



N532DS

RF data rate: 0.3 - 1000 kbps
 RF output power: +33dBm (+5V)
 RF sensitivity: -126 dBm
 Modulation: GFSK, FSK
 Frequency: 863MHz to 930Mhz
 RF pin, IPEX
 Interfaces: SPI, UART, IIC
 Dimension: 36 x 22 x 3 mm
 Operating voltage: 2-3.6V
 PA Operating voltage: 3-5V
 Consumption (Sleep): 1uA
 RF chip: TI CC1310/CC1312
 Mounting: SMD



N530AS

RF data rate: 0.3 - 1000 kbps
 RF output power: +14dBm
 RF sensitivity: -124 dBm
 Modulation: GFSK, FSK
 Frequency: 863MHz to 930Mhz
 (Option:430Mhz-510Mhz)
 RF pin
 Interfaces: SPI,UART,IIC
 Dimension: 25 x 19 x 3 mm
 Operating voltage: 2-3.6V
 Consumption (Sleep): 1uA
 RF chip: TI CC1310
 Mounting: SMD



N531AS

RF data rate: 0.3 - 1000 kbps
 RF output power: +14dBm
 RF sensitivity: -124 dBm
 Modulation: GFSK, FSK
 Frequency: 863MHz to 930Mhz
 (Option:430Mhz-510Mhz)
 RF pin
 Interfaces: SPI,UART,IIC
 Dimension: 25 x 19 x 3 mm
 Operating voltage: 2-3.6V
 Consumption (Sleep): 1uA
 RF chip: TI CC1312
 Mounting: SMD



N532FS

RF data rate: 0.3 - 1000 kbps
 RF output power: +24dBm (+3.6V)
 RF sensitivity: -124 dBm
 Modulation: GFSK, FSK
 Frequency: 863MHz to 930Mhz
 (Option:430Mhz-510Mhz)
 RF pin,IPEX
 Interfaces: SPI,UART,IIC
 Dimension: 31 x 22 x 3 mm
 Operating voltage: 2-3.6V
 PA Operating voltage: 3-5V
 Consumption (Sleep): 1uA
 RF chip: TI CC1310/CC1312
 Mounting: SMD



N532CS

RF data rate: 0.3 - 1000 kbps
 RF output power: +27dBm (+3.3V)
 RF sensitivity: -126 dBm
 Modulation: GFSK, FSK
 Frequency: 863MHz to 930Mhz RF
 pin,IPEX
 Interfaces: SPI,UART,IIC
 Dimension: 31 x 22 x 3 mm
 Operating voltage: 2-3.6V
 Consumption (Sleep): 1uA
 RF chip: TI CC1310/CC1312
 Mounting: SMD



N532ES

RF data rate: 0.3 - 1000 kbps
 RF output power: +30dBm (+3.6V)
 RF sensitivity: -126 dBm
 Modulation: GFSK, FSK
 Frequency: 863MHz to 930Mhz
 (Option:430Mhz-510Mhz)
 RF pin,IPEX
 Interfaces: SPI,UART,IIC
 Dimension: 36 x 22 x 3 mm
 Operating voltage: 2-3.6V
 PA Operating voltage: 3-5V
 Consumption (Sleep): 1uA
 RF chip: TI CC1310/CC1312
 Mounting: SMD



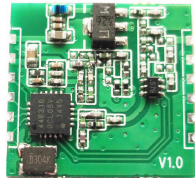
N540AS

RF data rate: 1.2 - 500 kbps
 RF output power: +20dBm
 RF sensitivity: -120 dBm
 Modulation: GFSK, FSK
 Frequency: 860MHz to 930Mhz
 (Option:430Mhz-510Mhz)
 RF pin
 Interfaces: SPI
 Dimension: 16 x 16 x 3 mm
 Operating voltage: 2-3.6V
 Consumption (Sleep): 1uA
 RF chip: SI4463
 Mounting: SMD



N545AS

RF data rate: 1.2 - 500 kbps
 RF output power: +33dBm (+5V)
 RF sensitivity: -126 dBm
 Modulation: GFSK, FSK
 Frequency: 863MHz to 930Mhz
 RF pin,ipex
 Interfaces: SPI
 Dimension: 30 x 24 x 3 mm
 Operating voltage: 2-3.6V
 PA Operating voltage: 3-6V
 Consumption (Sleep): 1uA
 RF chip: SI4463
 Mounting: SMD



N541AS

RF data rate: 1.2 - 500 kbps
 RF output power: +24dBm (+3.6V)
 RF sensitivity: -120 dBm
 Modulation: GFSK, FSK
 Frequency: 860MHz to 930Mhz
 RF pin
 Interfaces: SPI
 Dimension: 36 x 22 x 3 mm
 Operating voltage: 2-3.6V
 PA Operating voltage: 2.4-6V
 Consumption (Sleep): 1uA
 RF chip: SI4463
 Mounting: SMD



N544AS

RF data rate: 1.2 - 500 kbps
 RF output power: +30dBm (+3.6V)
 RF sensitivity: -126 dBm
 Modulation: GFSK, FSK
 Frequency: 863MHz to 930Mhz
 (Option:430Mhz-510Mhz)
 RF pin,ipex
 Interfaces: SPI
 Dimension: 30 x 24 x 3 mm
 Operating voltage: 2-3.6V
 PA Operating voltage: 2.4-5V
 Consumption (Sleep): 1uA
 RF chip: SI4463
 Mounting: SMD



For questions please contact with us!

Contact information: **Shenzhen HeYan Technology CO.,LTD**
Hongkong Ulike Electronic Co.,Ltd
Address:Room307,Xinbaoyuan Building,N5179,District 74 Xin an Street, BaoAn
District,Shenz hen,China 518101
Sales department: +0086 755 29662101
E-mail : info@hkulike.com
Web: www.hkulike.com

All rights are reserved. Reproduction in whole or in part is prohibited without the prior written consent of the copyright owner. The information presented in this document does not form part of any quotation or contract, is believed to be accurate and reliable and may be changed without notice. No liability will be accepted by the publisher for any consequence of its use. Publication thereof does not convey nor imply any license under patent- or other industrial or intellectual property rights.