



Brochures of Coral RF

## Narrowband, Sigfox RF Product

Contact information: **Shenzhen HeYan Technology CO.,LTD**  
**Hongkong Ulike Electronic Co.,Ltd**  
Address:Room307,Xinbaoyuan Building,N5179,District 74 Xin'an Street, BaoAn  
District,Shenzhen,China 518101  
Sales department: +0086 755 29662101  
E-mail : info@hkulike.com  
Web: www.hkulike.com

# Narrowband, Sigfox RF Product



N511AS

RF data rate: 0 - 200 kbps  
 RF output power: +15dBm  
 RF sensitivity: -124 dBm  
 Modulation: Narrowband  
 Frequency: 820MHz to 960Mhz  
 (Option:410Mhz-480Mhz,164Mhz-192Mhz)  
 RF pin  
 Interfaces: SPI  
 Dimension: 20 x 17 x 3 mm  
 Operating voltage: 2-3.6V  
 Consumption (Sleep): 1uA  
 Chip: TI CC1120  
 Mounting: SMD



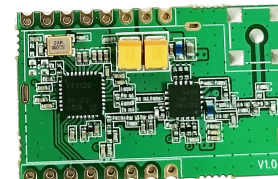
N515DS

RF data rate: 0.3 - 200 kbps  
 RF output power: +33dBm (+5V)  
 RF sensitivity: -124 dBm  
 Modulation: Narrowband  
 Frequency: 860MHz to 960Mhz  
 RF pin, IPEX  
 Interfaces: SPI  
 Dimension: 36 x 23 x 3 mm  
 Operating voltage: 2-3.6V  
 PA Operating voltage: 3-5V  
 Consumption (Sleep): 2uA  
 Chip: TI CC1120  
 Mounting: SMD



N515AS

RF data rate: 0.3 - 200 kbps  
 RF output power: +24dBm (+3.6V)  
 RF sensitivity: -126 dBm  
 Modulation: Narrowband  
 Frequency: 860MHz to 960Mhz  
 (Option:410Mhz-480Mhz,164Mhz-192Mhz)  
 RF pin, IPEX  
 Interfaces: SPI  
 Dimension: 30 x 23 x 3 mm  
 Operating voltage: 2-3.6V  
 PA Operating voltage: 2.4-6V  
 Consumption (Sleep): 1uA  
 Chip: TI CC1120  
 Mounting: SMD



N516CS

RF data rate: 0.3 - 200 kbps  
 RF output power: +27dBm (+3.3V)  
 RF sensitivity: -126 dBm  
 Modulation: Narrowband  
 Frequency: 860MHz to 960Mhz  
 RF pin, SMA  
 Interfaces: SPI  
 Dimension: 36 x 24 x 3 mm  
 Operating voltage: 2-3.6V  
 Consumption (Sleep): 2uA  
 Chip: TI CC1120  
 Mounting: SMD



N515ES

RF data rate: 0.3 - 200 kbps  
 RF output power: +30dBm (+3.6V)  
 RF sensitivity: -126 dBm  
 Modulation: Narrowband  
 Frequency: 860MHz to 960Mhz  
 (Option:410Mhz-480Mhz,164Mhz-192Mhz)  
 RF pin, IPEX  
 Interfaces: SPI  
 Dimension: 36 x 23 x 3 mm  
 Operating voltage: 2-3.6V  
 PA Operating voltage: 2-5V  
 Consumption (Sleep): 2uA  
 Chip: TI CC1120  
 Mounting: SMD



N517AS

RF data rate: 0.3 - 200 kbps  
 RF output power: +24dBm (+3.6V)  
 RF sensitivity: -126 dBm  
 Modulation: Narrowband  
 Frequency: 860MHz to 960Mhz  
 (Option:410Mhz-480Mhz,164Mhz-192Mhz)  
 RF pin, IPEX  
 Interfaces: SPI  
 Dimension: 30 x 23 x 3 mm  
 Operating voltage: 2-3.6V  
 PA Operating voltage: 3-6V  
 Consumption (Sleep): 1uA  
 Chip: TI CC1125  
 Mounting: SMD



N517ES

RF data rate: 0.3 - 200 kbps  
RF output power: +30dBm (+3.6V)  
RF sensitivity: -126 dBm  
Modulation:Narrowband  
Frequency: 860MHz to 960Mhz  
(Option:410Mhz-480Mhz,164Mhz-192Mhz)  
RF pin,IPEX  
Interfaces: SPI  
Dimension: 36 x 23 x 3 mm  
Operating voltage: 2-3.6V  
PA Operating voltage: 2-5V  
Consumption (Sleep): 2uA  
RF chip: TI CC1125  
Mounting: SMD



N517DS

RF data rate: 0.3 - 200 kbps  
RF output power: +33dBm (+5V)  
RF sensitivity: -126 dBm  
Modulation:Narrowband  
Frequency: 860MHz to 960Mhz  
RF pin,IPEX  
Interfaces: SPI  
Dimension: 36 x 23 x 3 mm  
Operating voltage: 2-3.6V  
PA Operating voltage: 2-5V  
Consumption (Sleep): 2uA  
RF chip: TI CC1125  
Mounting: SMD



N512AS

RF data rate: 1.2 - 200 kbps  
RF output power: +15dBm  
RF sensitivity: -120 dBm  
Modulation: Narrowband  
Frequency: 860MHz to 960Mhz  
(Option:410Mhz-480Mhz,164Mhz-192Mhz)  
RF pin  
Interfaces: SPI,UART,IIC  
Dimension: 29 x 21 x3 mm  
Operating voltage: 3V  
Consumption (Sleep): 2uA  
Chip: TI CC1120,MCU  
Mounting: SMD



N513AS

RF data rate: 1.2 - 50 kbps  
RF output power: +24dBm (+3.6V)  
RF sensitivity: -124 dBm  
Modulation:Narrowband  
Frequency: 860MHz to 960Mhz  
(Option:410Mhz-480Mhz,164Mhz-192Mhz)  
RF pin  
Interfaces: SPI,UART,IIC  
Dimension: 36 x 24 x 3 mm  
Operating voltage: 2-3.6V  
PA Operating voltage: 2.4-6V  
Consumption (Sleep): 2uA  
Chip: TI CC1120,MCU  
Mounting: SMD



N513FS

RF data rate: 1.2 - 50 kbps  
RF output power: +30dBm (+3.6V)  
RF sensitivity: -126 dBm  
Modulation: Narrowband  
Frequency: 860MHz to 960Mhz  
(Option:410Mhz-480Mhz,164Mhz-192Mhz)  
RF pin,IPEX  
Interfaces: SPI,UART,IIC  
Dimension: 42 x 24 x 3 mm  
Operating voltage: 2-3.6V  
PA Operating voltage: 2-5V  
Consumption (Sleep): 2uA  
Chip: TI CC1120,MCU  
Mounting: SMD



N513ES

RF data rate: 1.2 - 50 kbps  
RF output power: +33dBm (+5V)  
RF sensitivity: -126 dBm  
Modulation:Narrowband  
Frequency: 860MHz to 960Mhz  
RF pin,IPEX  
Interfaces: SPI,UART,IIC  
Dimension: 42 x 24 x 3 mm  
Operating voltage: 2-3.6V  
PA Operating voltage: 2-5V  
Consumption (Sleep): 2uA  
Chip: TI CC1120,MCU  
Mounting: SMD



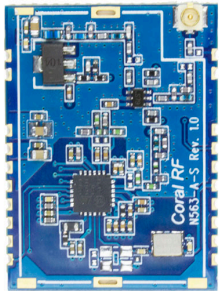
N561AS

RF data rate: 0.3 - 500 kbps  
RF output power: +30dBm (+3.6V)  
RF sensitivity: -126 dBm  
Modulation:Narrowband  
Frequency: 860MHz to 960Mhz  
RF pin,IPEX  
Interfaces: SPI  
Dimension: 36 x 24 x 3 mm  
Operating voltage: 2-3.6V  
PA Operating voltage: 2-5V  
Consumption (Sleep): 2uA  
RF chip: S2-LP  
Mounting: SMD



N561BS

RF data rate: 0.3 - 200 kbps  
RF output power: +33dBm (+5V)  
RF sensitivity: -126 dBm  
Modulation:Narrowband  
Frequency: 860MHz to 960Mhz  
RF pin,IPEX  
Interfaces: SPI  
Dimension: 36 x 24 x 3 mm  
Operating voltage: 2-3.6V  
PA Operating voltage: 2-5V  
Consumption (Sleep): 2uA  
RF chip: S2-LP  
Mounting: SMD



N563AS

RF data rate: 0.3 - 200 kbps  
RF output power: +24dBm (+3.3V)  
RF sensitivity: -122dBm  
Modulation:Narrowband  
Frequency: 860MHz to 960Mhz  
RF pin,IPEX  
Interfaces: SPI  
Dimension: 32 x 24 x 3 mm  
Operating voltage: 2-3.6V  
PA Operating voltage: 3-6V  
Consumption (Sleep): 2uA  
RF chip: S2-LP  
Mounting: SMD



**For questions please contact with us!**

Contact information: **Shenzhen HeYan Technology CO.,LTD**  
**Hongkong Ulike Electronic Co.,Ltd**  
Address:Room307,Xinbaoyuan Building,N5179,District 74 Xin an Street, BaoAn  
District,Shenz hen,China 518101  
Sales department: +0086 755 29662101  
E-mail : info@hkulike.com  
Web: www.hkulike.com

All rights are reserved. Reproduction in whole or in part is prohibited without the prior written consent of the copyright owner. The information presented in this document does not form part of any quotation or contract, is believed to be accurate and reliable and may be changed without notice. No liability will be accepted by the publisher for any consequence of its use. Publication thereof does not convey nor imply any license under patent- or other industrial or intellectual property rights.