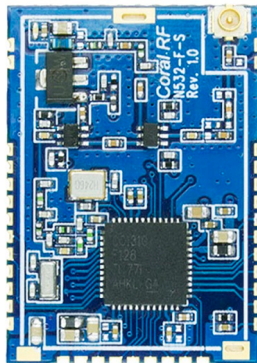


CC1310 CC1311 CC1312R Modules



N530AS

RF data rate: 0.3 - 1000 kbps
RF output power: +14dBm
RF sensitivity: -124 dBm
Modulation: GFSK,
FSK Frequency: 863MHz to 930Mhz
(Option:430Mhz-510Mhz)
RF pin
Interfaces: SPI,UART,IIC
Dimension: 25 x 19 x 3 mm
Operating voltage: 2-3.6V
Consumption (Sleep): 1uA
RF chip: TI CC1310/C11311/CC1312R
Mounting: SMD



N532FS

RF data rate: 0.3 - 1000 kbps
RF output power: +24dBm (+3.6V)
RF sensitivity: -124 dBm
Modulation: GFSK, FSK
Frequency: 863MHz to 930Mhz
(Option:430Mhz-510Mhz)
RF pin,IPEX
Interfaces: SPI,UART,IIC
Dimension: 31 x 22 x 3 mm
Operating voltage: 2-3.6V
PA Operating voltage: 3-7V
Consumption (Sleep): 1uA
RF chip: TI CC1310/C11311/CC1312R
Mounting: SMD



N532ES

RF data rate: 0.3 - 1000 kbps
RF output power: +30dBm (+3.6V)
RF sensitivity: -126 dBm
Modulation: GFSK, FSK
Frequency: 863MHz to 930MHz
RF pin,IPEX
Interfaces: SPI,UART,IIC
Dimension: 36 x 22 x 3 mm
Operating voltage: 2-3.6V
PA Operating voltage: 3-5V
Consumption (Sleep): 1uA
RF chip: TI CC1310/CC1311/CC1312R
Mounting: SMD



N532DS

RF data rate: 0.3 - 1000 kbps
RF output power: +33dBm (+5V)
RF sensitivity: -126 dBm
Modulation: GFSK, FSK
Frequency: 863MHz to 930MHz
(Option:430Mhz-510MHz)
RF pin,IPEX
Interfaces: SPI,UART,IIC
Dimension: 36 x 22 x 3 mm
Operating voltage: 2-3.6V
PA Operating voltage: 3-5V
Consumption (Sleep): 1uA
RF chip: TI CC1310/CC1311/cCC1312R
Mounting: SMD



N534AP

RF data rate: 0.3 - 1000 kbps
RF output power: +14dBm
RF sensitivity: -122 dBm
Modulation: GFSK, FSK
Frequency: 860MHz to 930MHz
(Option:430Mhz-510MHz)
antenna
Interfaces: USB
Dimension: 33 x 19 x 7 mm
Operating voltage: 5V
RF chip: TI CC1310/CC1311/cCC1312R
Mounting: SMD



For questions please contact with us!

Contact information: **Shenzhen HeYan Technology CO.,LTD**
Hongkong Ulike Electronic Co.,Ltd

Address:Room307,Xinbaoyuan Building,N5179,District 74 Xin an Street, BaoAn District,Shenz hen,China 518101

Sales department: +0086 755 29662101

E-mail : info@coralradio.com

Web: www.coralradio.com

All rights are reserved. Reproduction in whole or in part is prohibited without the prior written consent of the copyright owner. The information presented in this document does not form part of any quotation or contract, is believed to be accurate and reliable and may be changed without notice. No liability will be accepted by the publisher for any consequence of its use. Publication thereof does not convey nor imply any license under patent- or other industrial or intellectual property rights.